
THE SHOFAR

The Monthly Bulletin of the BJCC

November 2020 / Cheshvan-Kislev 5781



Blacksburg Jewish Community Center
Corner of Church and Roanoke Streets, PO Box 782
Blacksburg, VA 24063 (540) 300-BJCC
Web site: www.bjccblacksburg.org



SCHEDULE OF SHABBAT SERVICES

[Saturday Shabbat services begin at 10:00 AM]

SERVICES

Nov. 7–Vayera–E. Hallerman

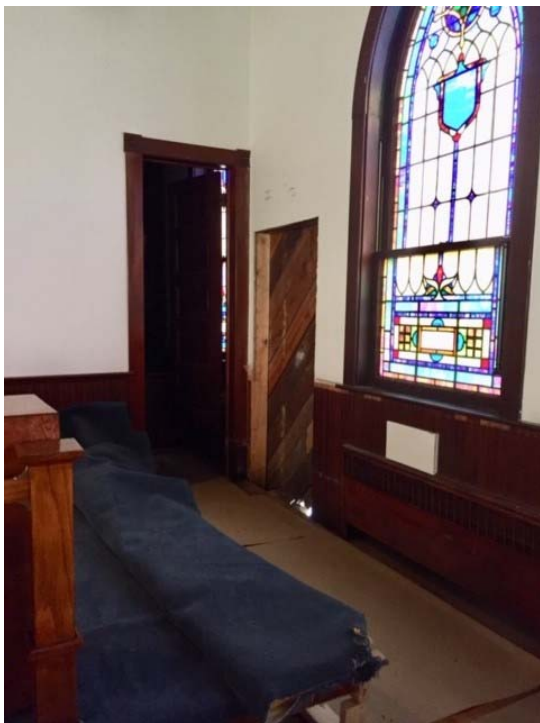
Nov. 14–Chayei Sarah–R. Scheckler

Nov. 21–Toledot–M&S Kranowski

Nov. 28–Vayeitzei– E. Hallerman

SERVICES WILL BE REMOTE

It seems likely that we'll still be observing social distancing throughout the next month and that we'll continue holding services remotely on Zoom. A service leader will inform us via email a couple of days before the services about how to join the upcoming session. Having remote services is not the same as worshiping together, but it's a way to connect with one another and feel Jewish together.



PRESIDENT'S CORNER

As our daylight slips away and the colors of the leaves on our Zoom backgrounds change, we are reminded that while our year is not normal, the seasons still occur. It's comforting to see the usual change in color and feel the briskness outside.

However, not everything is staying the same. The BJCC board has been making some changes to our congregation's building. In our continued efforts to improve safety, we have embarked on a new project—the creation of a fire escape. (See nearby picture.) We have placed an exterior door at the front of the sanctuary that will lead to a metal fire escape stair. The door will have an indoor handle, only to be used in emergencies. To make access to the door easier, we have had to make some larger changes, by cutting the edge of the bima away and dropping the floor to the back stair. In the near future, we will be making some more improvements to the “saloon” doors at the back of the sanctuary. The board is excited about these changes and hopes that we will all return to a safer BJCC when we can.

I hope everyone is well. Please feel free to reach out to me or any of the board members with concerns—or just to say hello.

Shalom! Dan, BJCC Pres.

SHOFAR DEADLINE, NOV. 24

The deadline for submitting news for the next issue of the *Shofar* is Nov. 24. Send information to Richard at [richard \[at\] vt.edu](mailto:richard[at]vt.edu).



BJCC CONTRIBUTIONS TO MICAH'S BACKPACK

Micah's Backpack (MBP) is a non-profit organization that addresses food insecurity for youth in ten local schools. For many years, Ruth Grene has organized a food drive at the BJCC during the High Holidays, requesting that congregants drop off food at the sanctuary when they attended services. Because we held online services this year and since the building has been closed since March, we planned a different model for the event—a food pick-up! Recent Bar Mitzvah Jacob Keese and his mother, Madeline Schreiber, asked BJCC members and friends to purchase food items and leave them on their porches for “contact-free” pick up. Fourteen families signed up to participate. On Oct. 3, Maddy and Jacob drove around Blacksburg to pick up the food donations. At the end of the route, Maddy's car was completely filled with food, enough to fill 2 grocery carts. In addition to the families who donated food, other families made cash donations to MBP. The Director of MBP, John Stramiello, greatly appreciated the BJCC's efforts and donations. Thanks to everyone who participated!

STILL THE TIME TO PAY DUES

If you haven't done so already, please send in your dues (\$700 per family, or \$350 per individual) and Religious/Sunday School fees (new lower rates; see BJCC website) and contact Marta Brinberg for details. As always, individuals and families can discuss a reduction of dues and/or fees in privacy with the treasurer, Stephen Scheckler. The BJCC mission is to serve the needs of New River Valley Jews. No one will be turned away for lack of financial resources.

THANKS FOR THE DONATIONS

Our thanks to the following BJCC members who generously made donations totaling almost \$2,000 this season to the Blacksburg Interfaith Food Pantry:

- Marta and David Brinberg
- Leslie Kay and William Floyd
- Ester and Eric Hallerman
- Rebecca and Stephen Scheckler
- Rita and Bradley Klein
- Pam and Daniel Sable
- Marcia Shumsky
- Doris and Richard Zallen
- Anonymous
- And others who contributed directly to the food pantry.

Special thanks also to **Melvyn Huber** for donating \$1,000 to create a “Huber Mitzvah Fund” to acknowledge each “each new Bar or Bat Mitzvah young person” on the occasion of their ceremonial Torah reading. Each B'nai Mitzvah will receive a gift of \$54 (3 times Chai). This gift supplements the one given by the BJCC and will continue Mel's long-standing practice of welcoming new young members to the Torah.

HILLEL NEWS

See the Hillel calendar, and obtain more info at <http://hillelatvirginiatech.com>.



November 2020 / Cheshvan-Kislev 5781

Sun	Mon	Tue	Wed	Thu	Fri	Sat
1 14 Cheshvan	2 15 Cheshvan	3 16 Cheshvan	4 17 Cheshvan	5 18 Cheshvan	6 19 Cheshvan	7 20 Cheshvan Parashat Vayera
8 21 Cheshvan	9 22 Cheshvan	10 23 Cheshvan	11 24 Cheshvan	12 25 Cheshvan	13 26 Cheshvan	14 27 Cheshvan Parashat Chayei Sarah
15 28 Cheshvan	16 29 Cheshvan Sigd	17 1 Kislev Rosh Chodesh Kislev	18 2 Kislev	19 3 Kislev	20 4 Kislev	21 5 Kislev Parashat Toledot
22 6 Kislev	23 7 Kislev	24 8 Kislev Deadline for info for next issue of the <i>Shofar</i>	25 9 Kislev	26 10 Kislev	27 11 Kislev	28 12 Kislev Parashat Vayeitzei
29 13 Kislev	30 14 Kislev					

BJCC Officers and Board Members 2020-21

(Officers are definite; some committee chairs need to be verified)

These email addresses are being protected against automatic spamming by using “[at]” and a space before and after what would normally be an @ sign. If you use one of these addresses, be sure to replace the [at] with @ and without the spaces.

President	Dan Hindman	dhindman [at] vt.edu
President-elect (V.P.)	Open	
Past President	Aaron Goldstein	goldst [at] vt.edu
Treasurer	Stephen Scheckler	stephen [at] vt.edu
Secretary	Maddy Schreiber	mekeese [at] gmail.com
Education Chair	Wendy Silverman	wssilverman [at] gmail.com
Community Service/Tzedakah Chair	Ruth Grene	greneruth [at] gmail.com
	Linda Deemer	lrdeemer [at] comcast.net
Religion Chair	Muriel Kranowski	murielk [at] vt.edu
Social Co-Chairs	Ruth Grene	greneruth [at] gmail.com
	Open	
Building Chair	Al Kornhauser	alkorn [at] vt.edu
Culture Chair	Rebecca Scheckler	rscheckler [at] Radford.edu
Board members-at-large	Bradley and Rita Klein	bklein [at] vt.edu
	Sharone Tomer	sharoneltomer [at] gmail.com
BJCC listserv keeper	Muriel Kranowski	murielk [at] vt.edu
Membership Co-chairs	Linda Deemer	lrdeemer [at] comcast.net
	Open	
Religious school director	Marta Brinberg	martabrinberg [at] hotmail.com
<i>Shofar</i> Editor	Richard Hirsh	richard [at] vt.edu